



# Do Your Builds Introduce Risk?

Protect your brand and product integrity by verifying your software is secure.

Illuminate hidden risk in your compiled software, and ensure that components included are as your developers intended.



SBOM

## THE CHALLENGE

# Your SBOM Doesn't Match Your Builds

Even when your team generates a Software Bill of Materials (SBOM) from source code scanners, key questions often remain unanswered:

- ❓ Do the components in the software you built actually match those in your manifest?
- ❓ Have you unintentionally included risk via misconfigurations, hard-coded secrets, or public/private keys?
- ❓ Can you confidently tell customers what's in the software powering the systems they buy from you?



SBOM

## These gaps persist because:

- 🔧 Software composition analysis doesn't always reflect what's actually compiled and built.
- 👤 Build processes can introduce changes that rarely make it back into SBOMs that were derived from source code.
- ⚠️ Legacy tools ignore risk in configuration files, credentials, scripts, and containers.

**If you can't see into what's actually in your builds, your product security team is flying blind.**

## Why You Need a Comprehensive SBOM

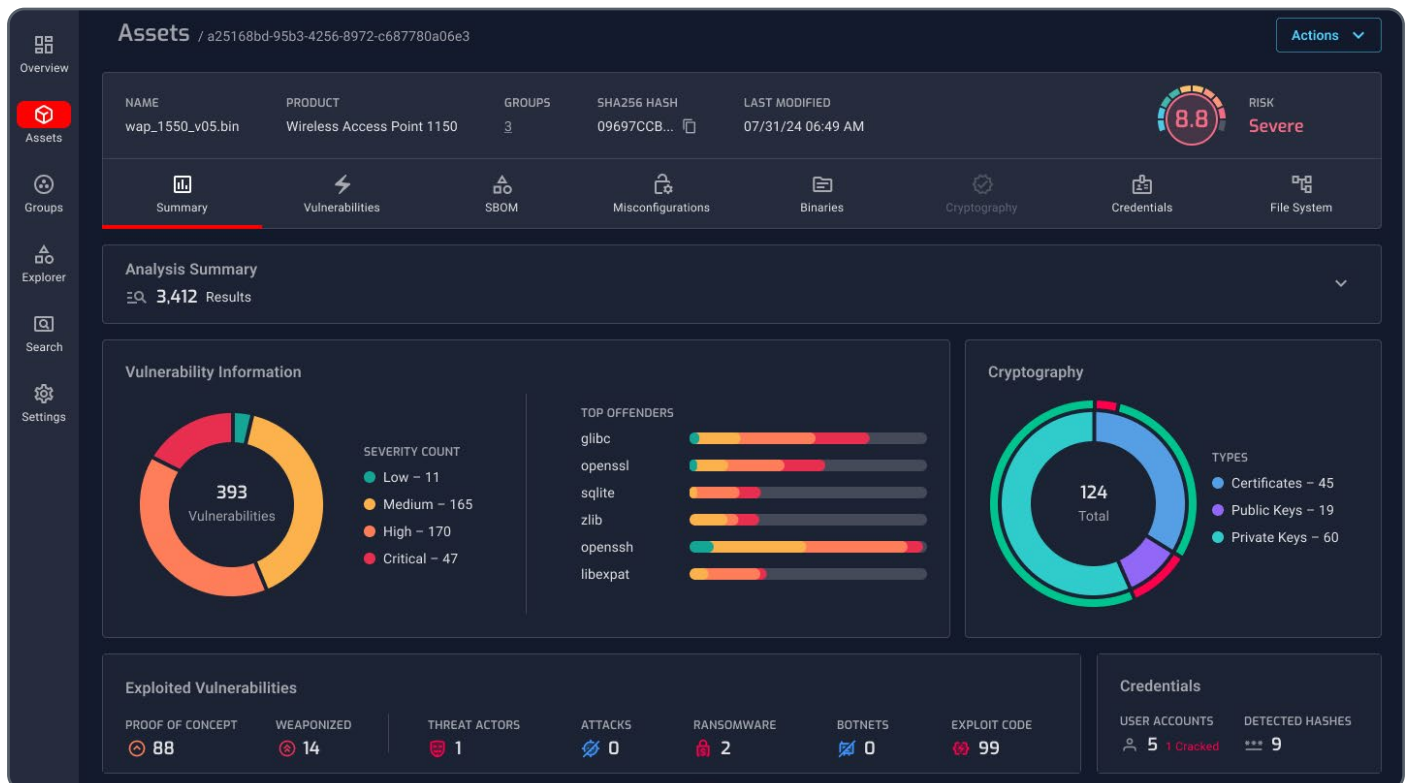
Software today is more assembled than written. A single application can include proprietary code, open-source packages, third-party modules, config files, operating systems, credentials, and more.

NetRise reveals what's really in your software that by analyzing compiled code, giving you clarity, control, and confidence.

### THE SOLUTION

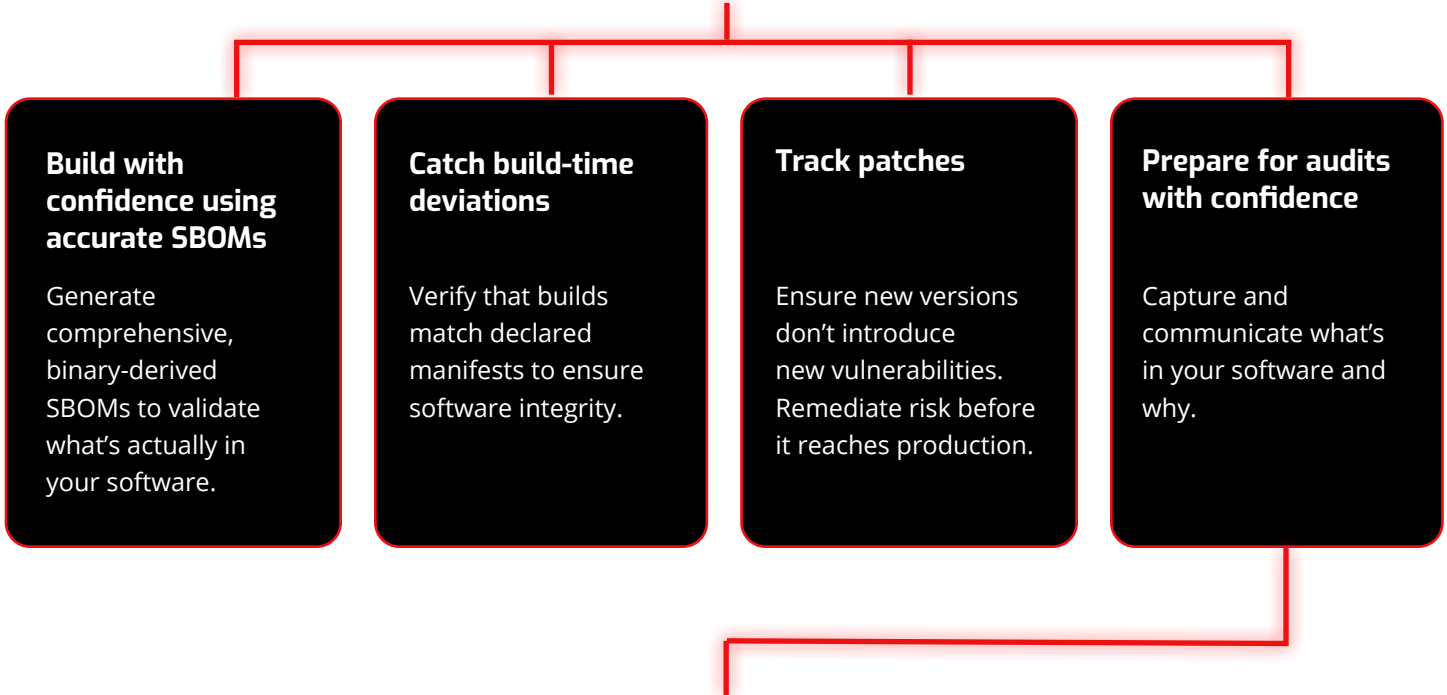
## NetRise: Software Supply Chain Security for Developers

NetRise is redefining software supply chain security. Our platform delivers the most complete and accurate view of software assets available. Rather than relying on legacy source-code analysis, NetRise uses advanced binary composition analysis to assess the software your customers actually execute, creating a comprehensive and accurate SBOM, identifying risk, and prioritizing remediation and mitigation.





# NetRise: A System of Intelligence for Software Security


Whether you build software for devices, desktop applications, or containerized services, NetRise helps your teams:




## Platform Overview

-  **Software Composition Transparency**

Complete SBOM offering a unified view of your software supply chain including source code and other artifacts: misconfigurations, containers, credentials, keys, scripts, and more.
-  **Software System of Intelligence**

Leverage enriched context around software vulnerabilities—including a description, a reference to the CVE source, advisories, severity metrics, and more—alongside key lifecycle indicators such as licensing and provenance.
-  **Binary Composition Analysis**

Analyze compiled and interpreted software to understand component-level relationships and identify hidden software risk.
-  **Compliance Readiness**

Deliver evidence for E.O. 14028, EU CRA, ISO 27001, NIST CSF 2.0, and other frameworks, without slowing down your team.

**NetRise delivers the visibility and context needed to build and ship secure software.**

# Why NetRise Stands Apart



## Exploit-Aware Prioritization

Focus on real risk with enriched vulnerabilities including weaponization, privileges, and CVSS impact.



## Reachability Insights

Identify components that autorun or initialize at startup to prioritize remediation.



## Integration-Ready

Connect with the tools your team already uses, supporting CI/CD, ticketing, and compliance workflows via APIs.



## NetRise ZeroLens®

Detect CWEs and risky code patterns in compiled software before they become known vulnerabilities.



## Non-CVE Risk

Surfaces non-vulnerability risk around misconfigurations, credentials, keys, and licenses.

## Common Challenges NetRise Solves

### Challenge

You struggle to prioritize security findings.

You lack visibility into what's in your compiled builds.

You can't easily see into open-source dependencies.

You need audit-ready documentation.

### How NetRise Helps

**Focus** on vulnerabilities that are known to be weaponized, exploited, and accessible on the network, and autorun at startup.

**Analyze** the actual binaries and produce accurate, enriched SBOMs.

**Discover** open-source and other third-party code not visible through source scans.

**Provide** clear, detailed reports to support compliance.

What's inside *your* software?  
Find out now with NetRise.

Get Started